

# BLANCUS 40

www.floorpul.com



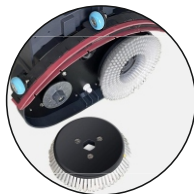
### Control panel

Button control panel  
 The operation is simple, clean and beautiful



### Lithium battery

Large capacity  
 Built-in charging port  
 More lightweight and durable



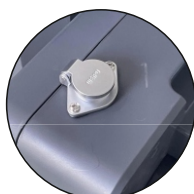
### Magnetic brush disk

Automatic magnetic suction on the card  
 More than the traditional rotation of the card  
 More convenient installation and disassembly



### Multiple charging modes

Lithium batteries com with their own charging ports  
 The charging position is not restricted by the machine



It can also be directly connected to the machine  
 Charging jack for charging



### Fixed universal joint

Activity can be in all directions  
 Turn the brush tray to clean



Upright machine when fixed  
 Water tank can be cleaned  
 He can also operate the machine with one hand



### Snap design



Latch type sewage tank lid  
 The sewage tank is easier to clean



### Split water tank

The water tank is secured by latches  
 Free from machine constraints  
 Add water for convenience



Item	Parameter
Rated voltage	DC36V
Working width	42cm
Absorbent width	44cm
The working efficiency	700m <sup>2</sup> /h
Brush disc diameter (bristles)	17,5cm (21cm)
Brush disk speed slow/fast	270/340rpm
Brush plate motor	2*150W
Brushing pressure	11kg
Suction motor	150W

Item	Parameter
Vacuum degree	120mbar
Turning radius	30cm
Clean water tank capacity	2L
Sewage tank capacity	3,5L
Noise level	63dB
Battery Pack	7,5Ah-36V (Lithium)
The battery weight	2kg
The total weight of the machine	16kg
The gross weight	20kg

